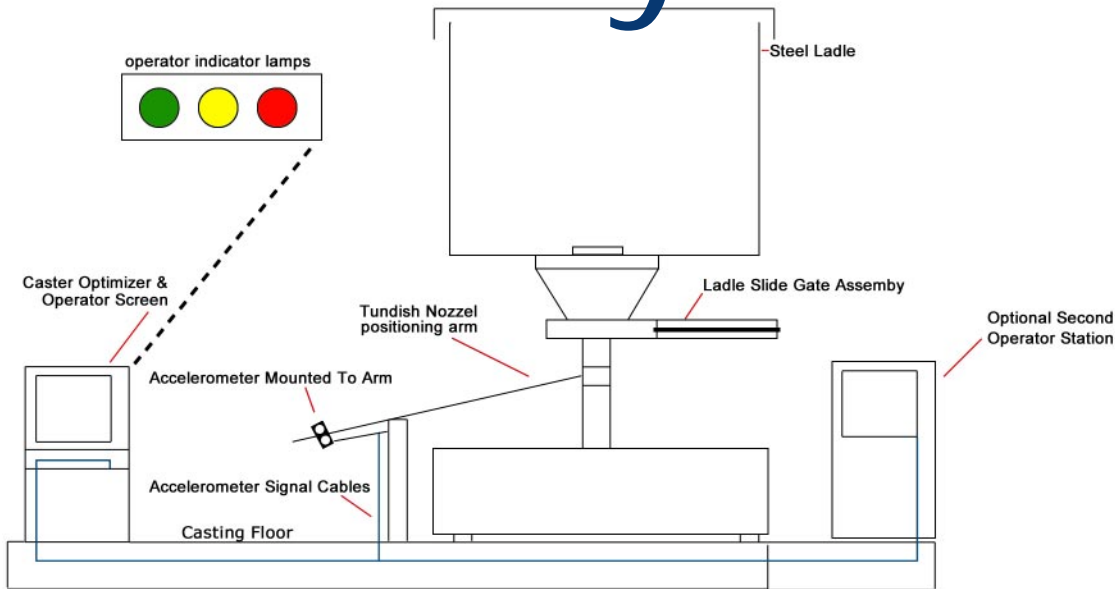


Caster Steel Optimizer System



PRES, Inc. offers a Caster Steel Optimizer (CSO) which provides operator notification of vortexing and presence of slag within the tundish shroud. The system is tunable for various caster mechanical systems and operator objectives i.e. slag minimization vs. maximum steel throughput.

The PRES, Inc. CSO Includes:

Operator notification for Vortexing & Slagging

Replay of each heat for diagnostics and for Operator training.

Correlation of replay data with IR camera so client has both the visual and playback signal to develop casting consistency

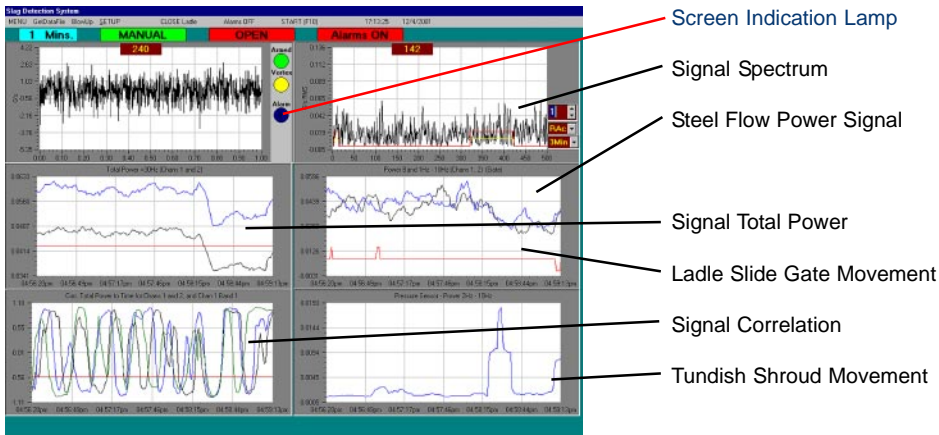
External alarming lights & audible indication

System uses multi-variable technology to avoid dependence on any one signal

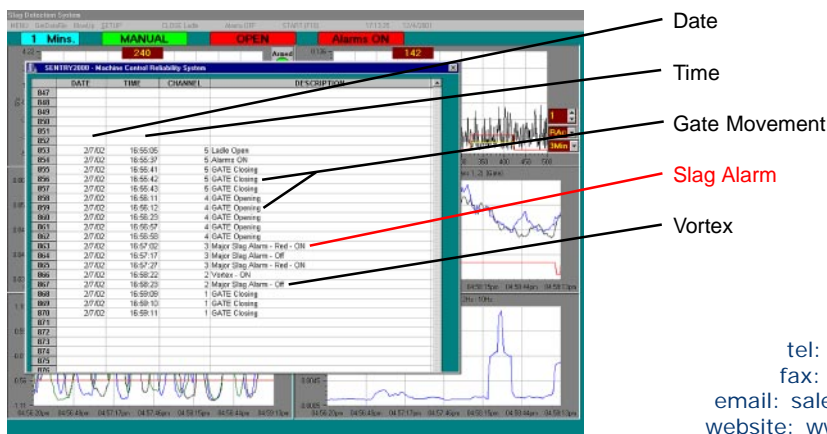
Tunable for Different type of casters and objectives

CSO can be integrated with ladle weights, cast speed, and time to slag signals, in order to develop a complete caster optimization program

Optimizer Diagnostic Panel - with Playback



Alarm Log for Each Cast



tel: (440) 899-7091
 fax: (440) 899-6880
 email: sales@pres-inc.com
 website: www.pres-inc.com

