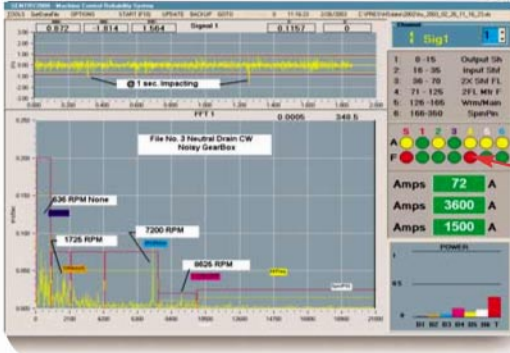


Sentry ICMS System

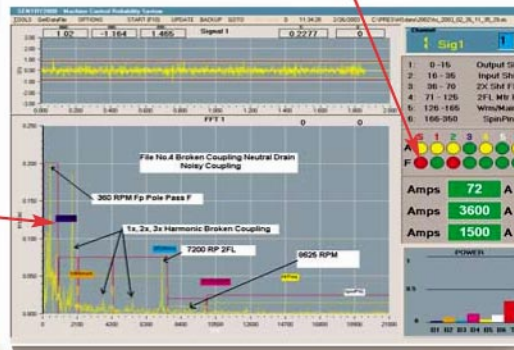
Motor/Gearbox Defect Detection 2

Screens below illustrate a Quality Control Application for Gearbox defect detection



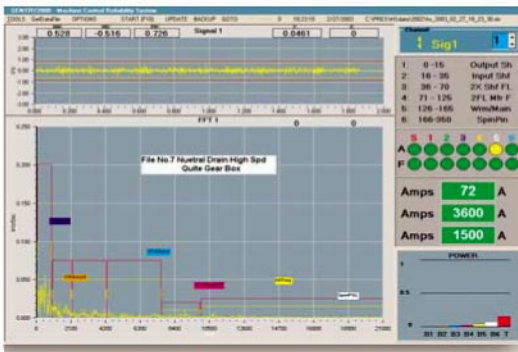
Gearbox
Noisy Gearbox High Speed CCW with broken coupling.
Note: Each FFT band is ID's on the spectrum

Gearbox
Noisy Gearbox High Speed Neutral
Fault (red) alarms for both waveform and in spectrum bands



Gearbox
Quiet Gearbox High Speed

Alarms can be ported to Plant Network,
Data for each gearbox saved for SPC analysis



Frequency Bands Set-Up:

Band No 1:	0-900 CPM (15 Hz) Output Shaft Speed	1X Output Shaft 636 CPM (11 Hz)
Band No 2:	960 - 2100 CPM (16-35 Hz) Input Shaft Speed	1X Input (Motor) Shaft 1725 RPM (29 Hz)
Band No 3:	2160 - 4200 CPM (36-70 Hz) 2X Shaft Speed, FL	2X Input (Motor) Shaft 3450 RPM (58 Hz) 1X Line Frequency 3600 CPM (60 Hz)
Band No 4:	4260 - 7500CPM (71-125 Hz) 2FL Motor Faults	2FL or 7200 CPM (120 Hz)
Band No 5:	7650 - 9000 CPM (126-150 Hz) Worm/Main GMF	Worm/Main Gear Mesh 8625 CPM (144 Hz)
Band No 6:	9060 - 21000 CPM (151-350 Hz) Spin/Pinion GMF, HF	Spin/Pinion Gear Mesh 19712 CPM (330 Hz)

www.pres-inc.com

Email: sales@pres-inc.com

Fax: (440) 899-6880

Tel: (440) 899-7091

935 Bassett Rd. Unit A
Westlake, OH 44145

PRES Inc.