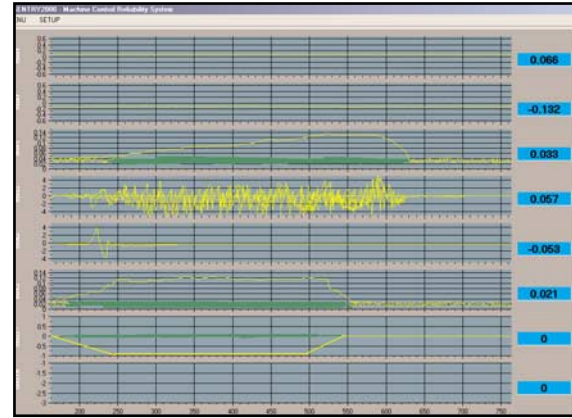


# Sentry2000<sup>®</sup> Data Acquisition Package

High Speed Real Time Data Acquisition/Analysis **Integrated** with User Defined Graphic Programs and Detailed Alarm Logging

**3.** Link-in Operating Data, i.e. Temperature, Load, Speed, Force

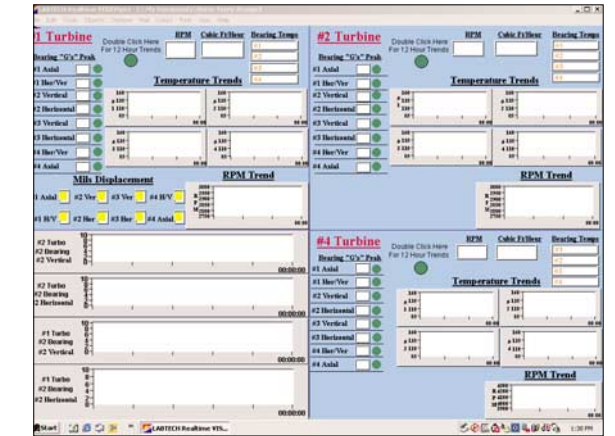


Speed  
Vibration  
Pressure  
Vibration

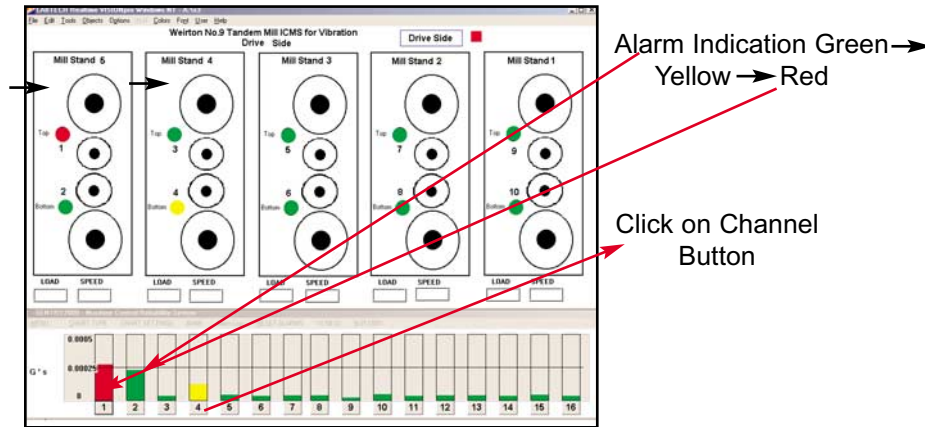
**2.** Use Pull Down Menu to load info from (1), copy and paste to all channels



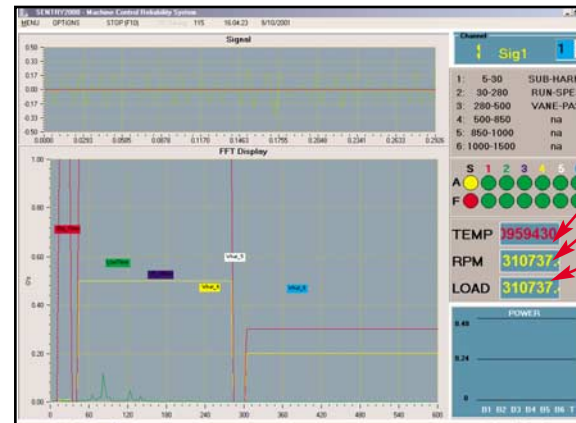
**4b.** Status Screen Labtech Client Generated



**4a.** Status Screen Labtech PRES, Generated



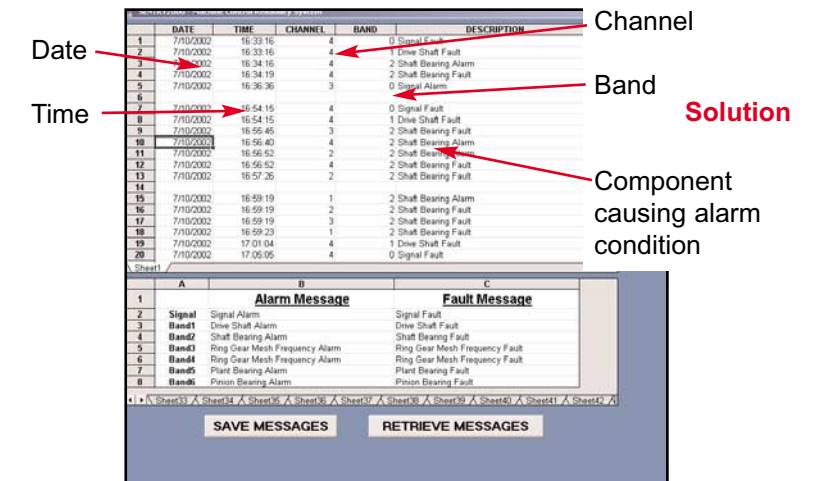
**8.** Report Screen



ID's Component in Alarm

Operating Data:  
Force/Temp  
Speed  
Load

**5.** Alarm Log Summary



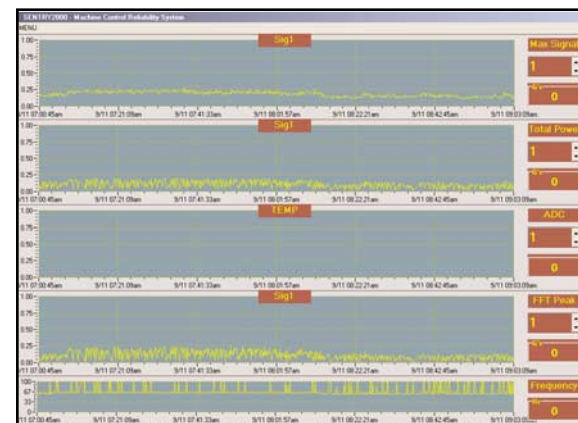
**1.** Define Application for Vibration ICMS

- \* Type of Equipment
- \* Operating Speed
- \* Establish Monitoring bands for motors/shafts/impellers/blades/bearings/spindles/VFD drives, etc.
- \* Establish alarm levels based on OEM/Industry stds. & experience
- \* Integrated with MS Tools



Display Entire Drive Train

**7.** Trend Screen: Alarm Assessment



**6.** Labtech Alert Alarm Log System

