

Infrared Thermography

for Preventive/Predictive Maintenance

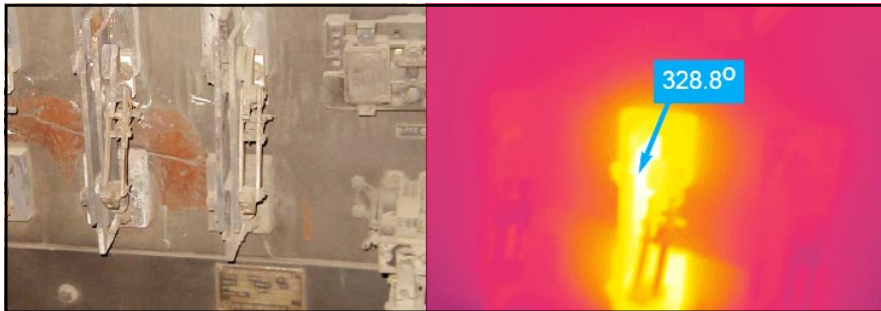
PRES, Inc. offers Infrared (IR) technology utilizing a highly trained and experienced staff and "State of the Art" equipment, and concise reporting.

IR technology can detect heat patterns which can be analyzed to identify maintenance problems. IR inspections locate potential problems before they cause failures. This reduces equipment damage and unscheduled downtime, saves energy, increases efficiency, and improves quality control.

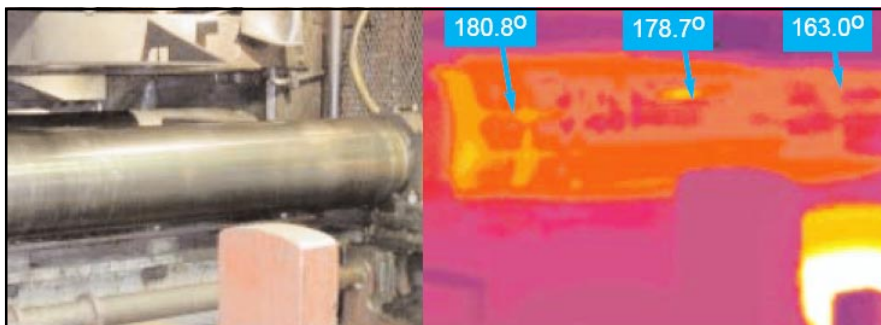
The greatest strength, as well as the most common use of IR inspection (thermography), is in the maintenance of power delivery systems (AC & DC), mechanical systems (ie: bearings, couplings, & etc.) and refractories. Using IR, the general integrity of each component that makes up the system can be inspected and evaluated.

No temporary outages are necessary. All scans are performed during normal operations while the system is fully loaded.

Typical Electrical Application: Switch Gear Hotspot



Typical Mechanical Application: Roll Temperature Profile



Infrared Thermography Applications

Electrical Systems

- Panels
- Buses/Switchgear
- Transformers
- Motor Control Centers
- Disconnects
- Substations
- Transmission Lines
- Cranes

Mechanical Systems

- Bearings
- Motors
- Couplings
- Low Speed Bearings
- Valves/Piping
- Spindle/Mandrels
- Gearboxes
- Power Trans. Drives

Refractories

- Blast Furnace Stoves
- Vessels/Ladles
- Reheat Furnaces